

Name: _____

Date: _____



The 4 Components of Astrobiology

Origin of Life

Evolution of Life

Distribution of Life

Future of Life

About Me

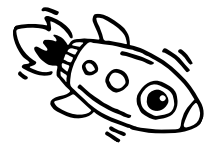


My Strengths, Skills, and Interests:

Career: _____

Strengths, skills, and interests that match this
career: _____

Picturing myself in this career:

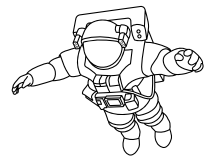


A large empty rectangular box for drawing or writing.

Career: _____

Strengths, skills, and interests that match this
career: _____

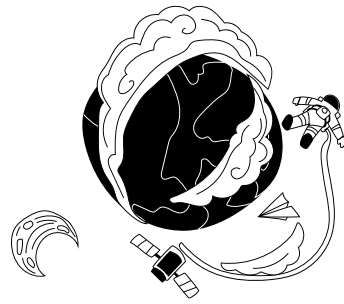
Picturing myself in this career:



A large empty rectangular box for drawing or writing.

Mission to: _____

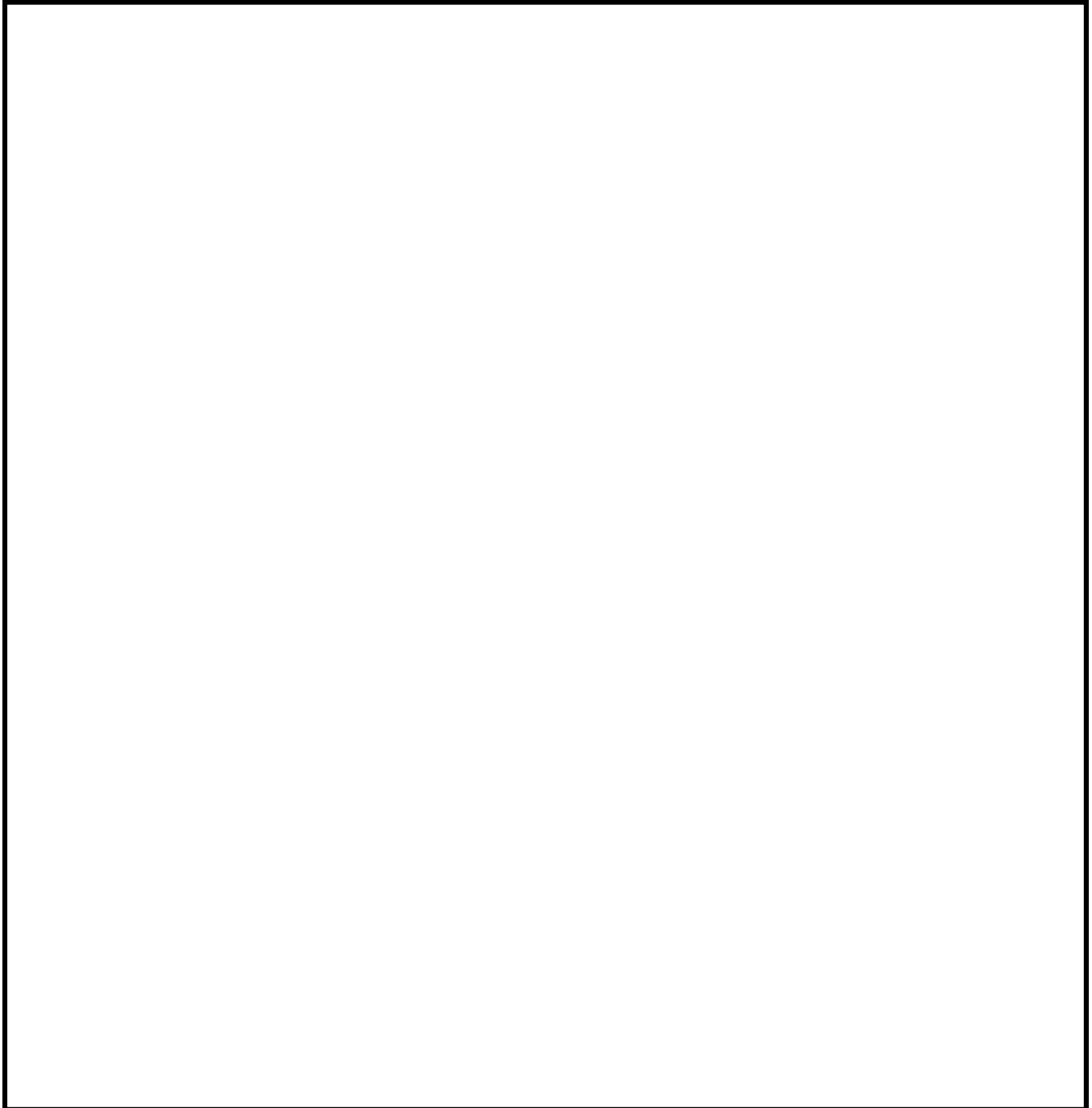
Discussion Questions:



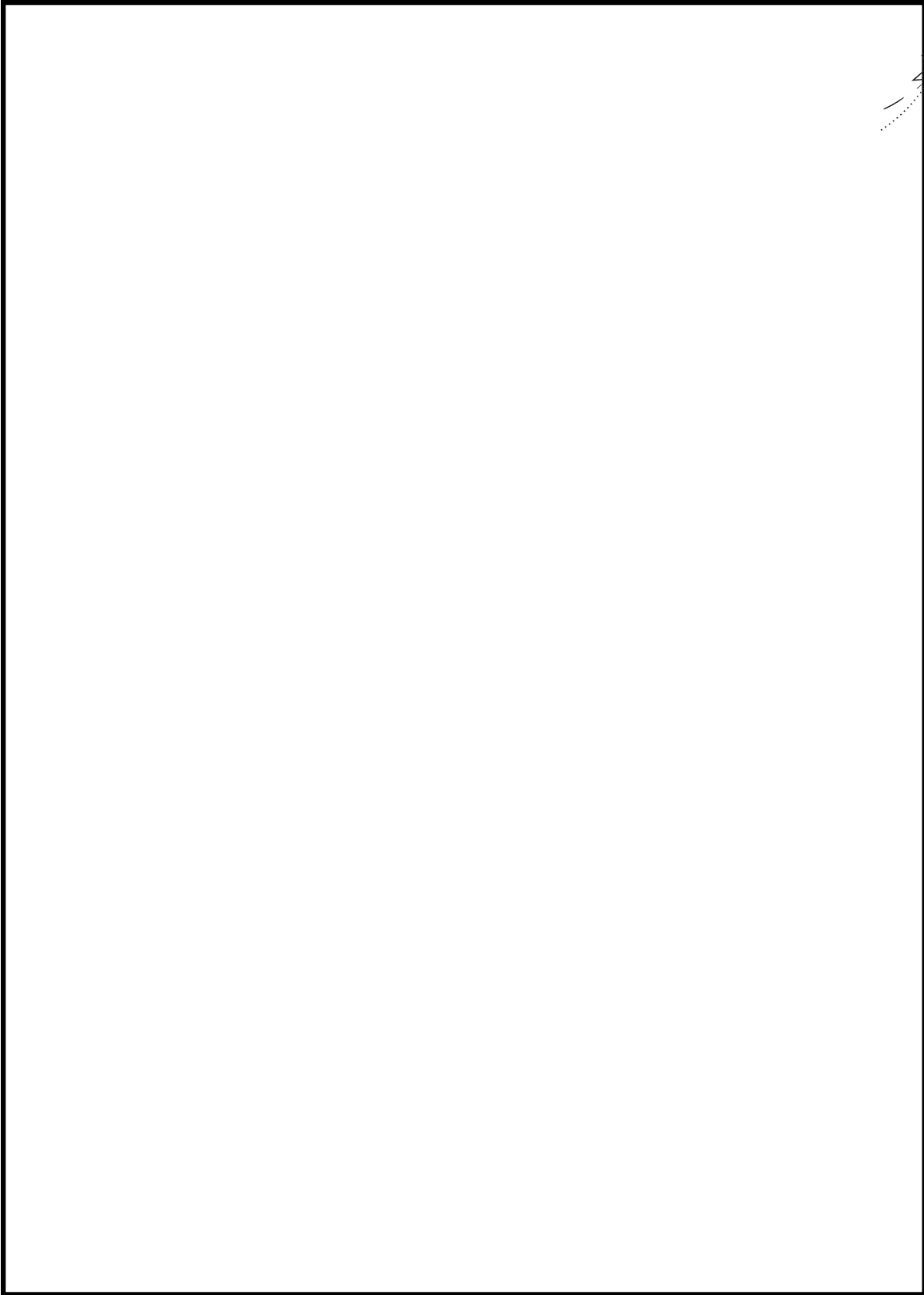
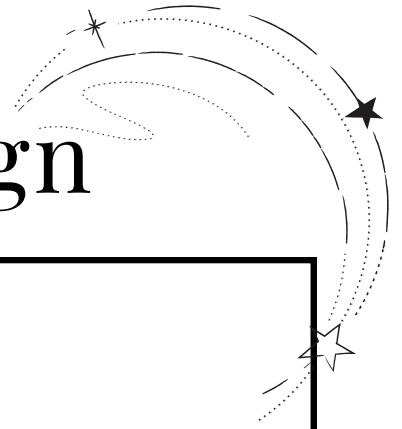
- Why study this world?
- What are our scientific goals for this mission?
- What do we hope to discover?
- What Earth analogues could we study to help prepare us for this mission?
- Is it safe for humans, or should the mission be robotic?
- What challenges might the mission face?
- How will we tackle these challenges?
- How will we avoid contaminating the planet?
- What measures can we take to protect any existing life?
- What instruments or technology will we send? (rovers, drills, life-detection tools, sample return mechanisms)
- How will our different careers contribute to the mission in other ways?

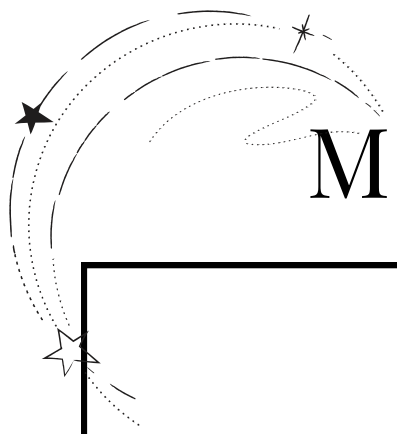
Career Notes

My job on this mission:

A large, empty rectangular box with a black border, intended for writing notes. It occupies the majority of the page below the introductory text.

Mission Design





Mission Design

