

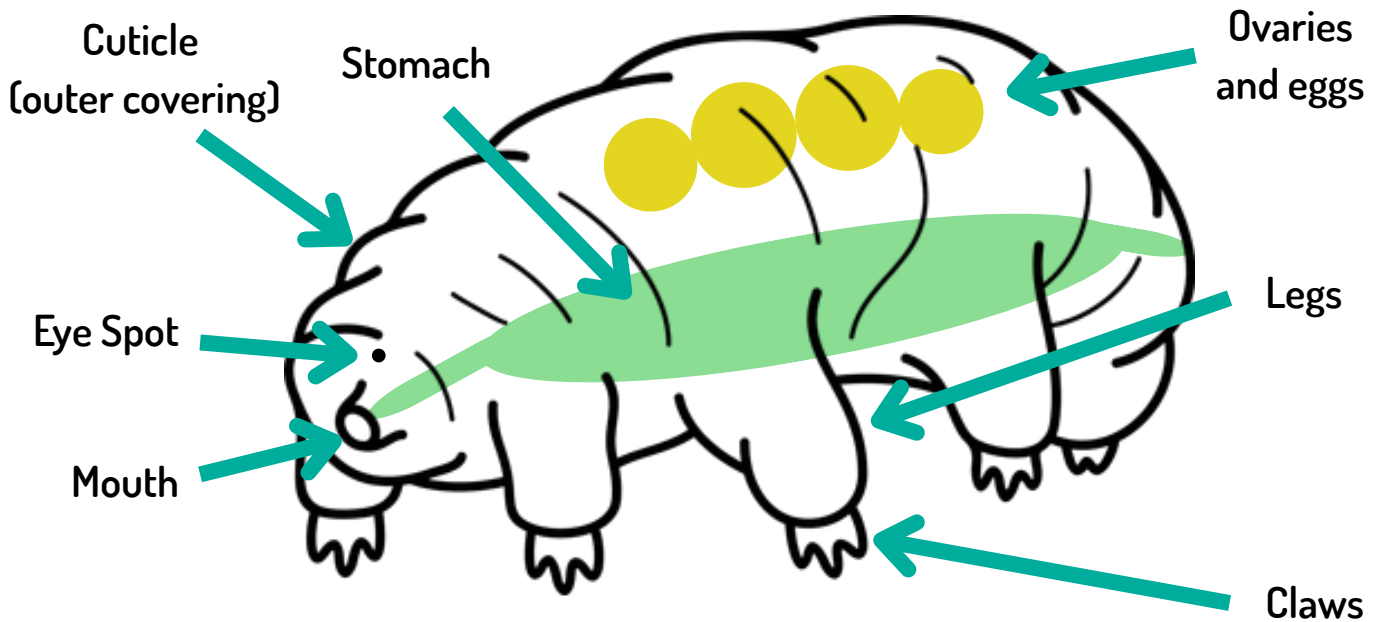
Name: _____

Date: _____



TARDIGRADE OBSERVATION WORKSHEET

Circle the body parts that are visible on your tardigrade:



Draw the tardigrade you are observing and label the body parts you can see.

A large, empty rectangular box with a black border, intended for the student to draw and label the tardigrade they are observing.

Name: _____

Date: _____



Tardigrade observation questions:

1 Observe your tardigrade's behavior and describe it below.

2 See if you can identify all 8 legs on your tardigrade. Tardigrades use their front 6 legs for getting around, while their back two legs (called caudal legs), are for grasping surfaces. Observe the tardigrade's legs and describe how your tardigrade is using its caudal legs differently than their other legs.

3 Do you see any other living things? Are they bigger or smaller than the tardigrade? How do they behave differently than the tardigrade?

4 Where do most tardigrades tend to cluster? How many tardigrades can you spot in the same area?
